



UNIVERSITAT
POLITÈCNICA
DE VALÈNCIA



Co-funded by the
Erasmus+ Programme
of the European Union 
561555-EPP-1-2015-1-ES-EPPKA2-CBHE-JP

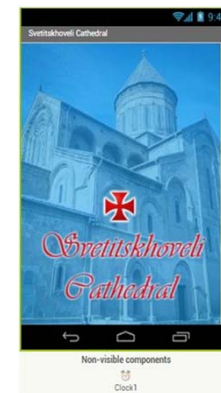
Transposing Erasmus+ HERiTAG training experience into mobile and web mapping study modules for GTU & GTTC

Irina Kazariani, Lead Teacher, Georgian Technical University, Georgia

Training Course – Mobile and Web Mapping for Cultural Heritage and Tourism

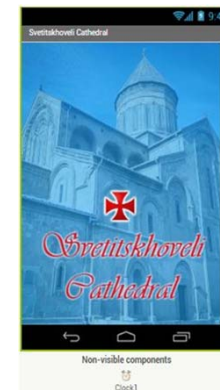
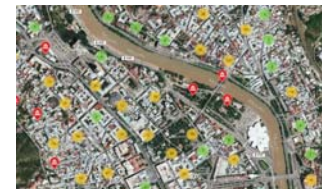


- Organised by: UPV partner and project coordinator
- Dates: 17-29 October 2016
- Location: The Polytechnic University of Valencia, Spain
- Trainers: Jesús Palomar, Jesús Irigoyen



Mobile and Web Mapping

Short Description



This course builds on developing mobile and web mapping applications. Offers students an opportunity to make maps in mobile and web applications and distribute those using free mapping tools (such as MIT App Inventor & Leaflet). Topics include mobile development, web development & mapping on both of them.



Learning Outcomes

*Knowledge of creating mobile and web mapping applications with emphasis on relevance for cultural heritage and tourism sectors.
Understand how to create mobile mapping applications and how to create a dynamic web page with interactive map.*



UNIVERSITAT
POLITÀCNICA
DE VALÈNCIA



Co-funded by the
Erasmus+ Programme
of the European Union 
561555-EPP-1-2015-1-ES-EPPKA2-CBHE-JP

Teaching Method

Lectures followed by practical hands on GIS Class sessions for students independently creating their first mobile and web mapping application following detailed instructions.



UNIVERSITAT
POLITÈCNICA
DE VALÈNCIA



Co-funded by the
Erasmus+ Programme
of the European Union 
561555-EPP-1-2015-1-ES-EPPKA2-CBHE-JP

Assignments and Literature

- Lecture notes with detailed instructions for application development.
- Teaching PowerPoint files.
- Sample data for project development.
- Further materials for independent continuation of skills development.



Syllabus for Bachelor's Educational Program - Geoinformatics

Mobile and Web Mapping (5 credits)

Distribution of hours (1 credit = 25 hours)

15 lectures – 30 practical classes – 78 independent work

Course aim

The course aims to introduce students an opportunity to get acquainted with the effective modern technologies, tools and techniques for creating mobile and web mapping applications.

Knowledge and acquired skills as a result of studying the subject

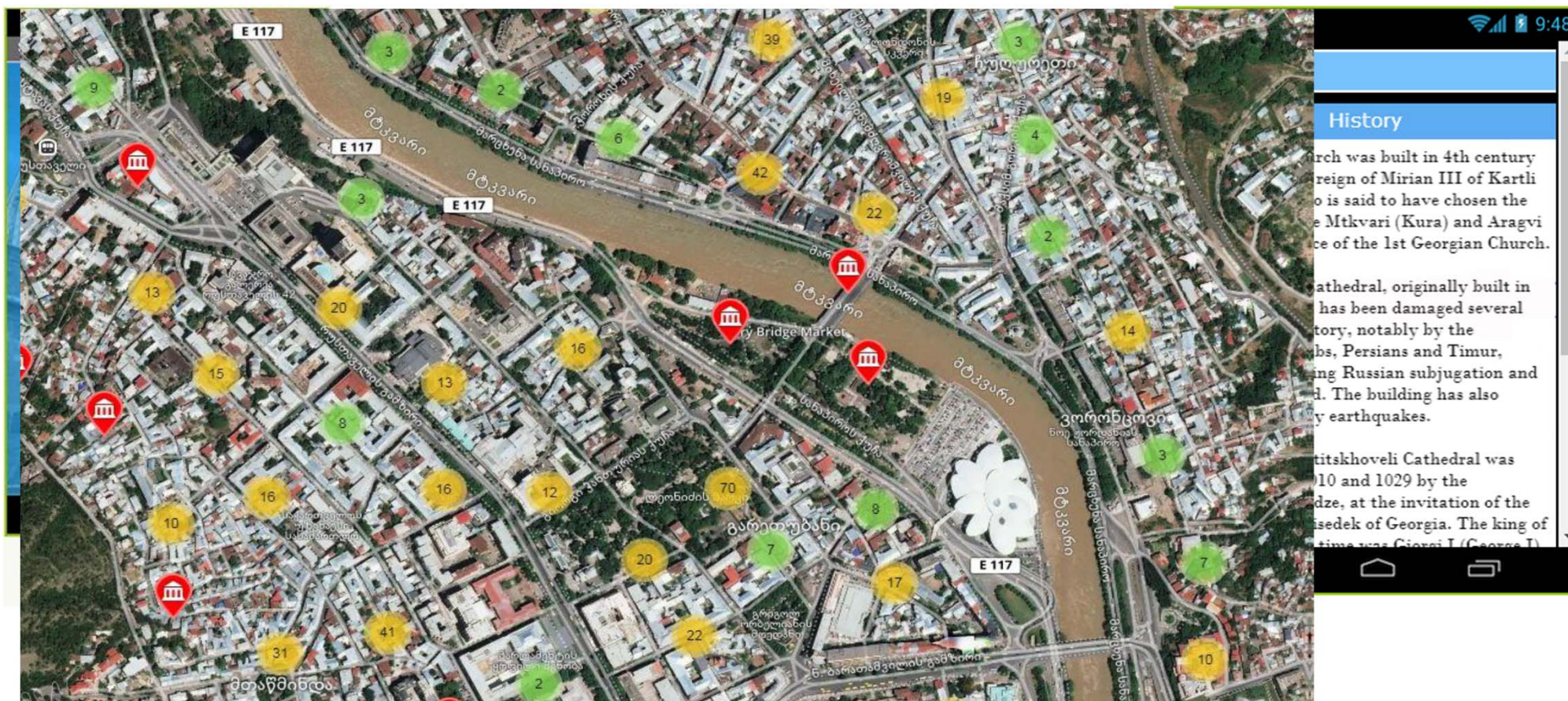
*The student has knowledge of **basic principles, approaches and methods of mobile and web mapping**. Understanding the possibility and the advantages of usage of mobile and web mapping applications. **Ability to select the appropriate methods, technologies and tools in practice based on the obtained knowledge.***



GTTC Continuing Education Course

- **"Introduction into Application of Geoinformation Technologies to Cultural Heritage and Tourism Economics"**
- **ISU Module 1:** Introduction into Tourism Economics (delivered by ISU Institute of Economics and Business)
- **ISU Module 2:** Applying GIT in Archaeology (ISU Cultural Heritage and Environment Research Center)
- **GTU Module 1:** 3D Laser Scanning Hardware & Software Application to Cultural Heritage (GTU, support NACHPG)
- **GTU Module 2:** Mobile and Web Mapping for Cultural Heritage and Tourism Applications (GTU)
- **GTU Module 3:** Application of GIS in Cultural & Natural Heritage Management (GTU, support NACHPG/ISU/GeoG)

Mobile and Web Mapping applications



HERITAG Moodle Georgia

GTU Mobile and Web Mapping Applications



This course builds on developing mobile and web mapping applications. Offers Bachelor's Degree students an opportunity to make maps in mobile and web applications and distribute those using free mapping tools (such as MIT App Inventor & Leaflet). Topics include mobile development, web development & mapping on both of them. These instruments can be applied in any sectoral fields in need of deployment of mobile and web mapping data dissemination applications, such as cultural heritage, tourism, urban planning, protected areas, forestry, geology, etc. The course consists of two modules for learning how to

- Create a mobile mapping application;
- Create a dynamic web page with interactive map.



UNIVERSITAT
POLITÈCNICA
DE VALÈNCIA



Co-funded by the
Erasmus+ Programme
of the European Union



561555-EPP-1-2015-1-ES-EPPKA2-CBHE-JP

