



UNIVERSITAT
POLITÀCNICA
DE VALÈNCIA



GEOgraphic
GIS & RS CONSULTING CENTER

Co-funded by the
Erasmus+ Programme
of the European Union



561555-EPP-1-2015-1-ES-EPPKA2-CBHE-JP

Measuring, documenting and sharing 3D scan visualisations via free plugin viewer

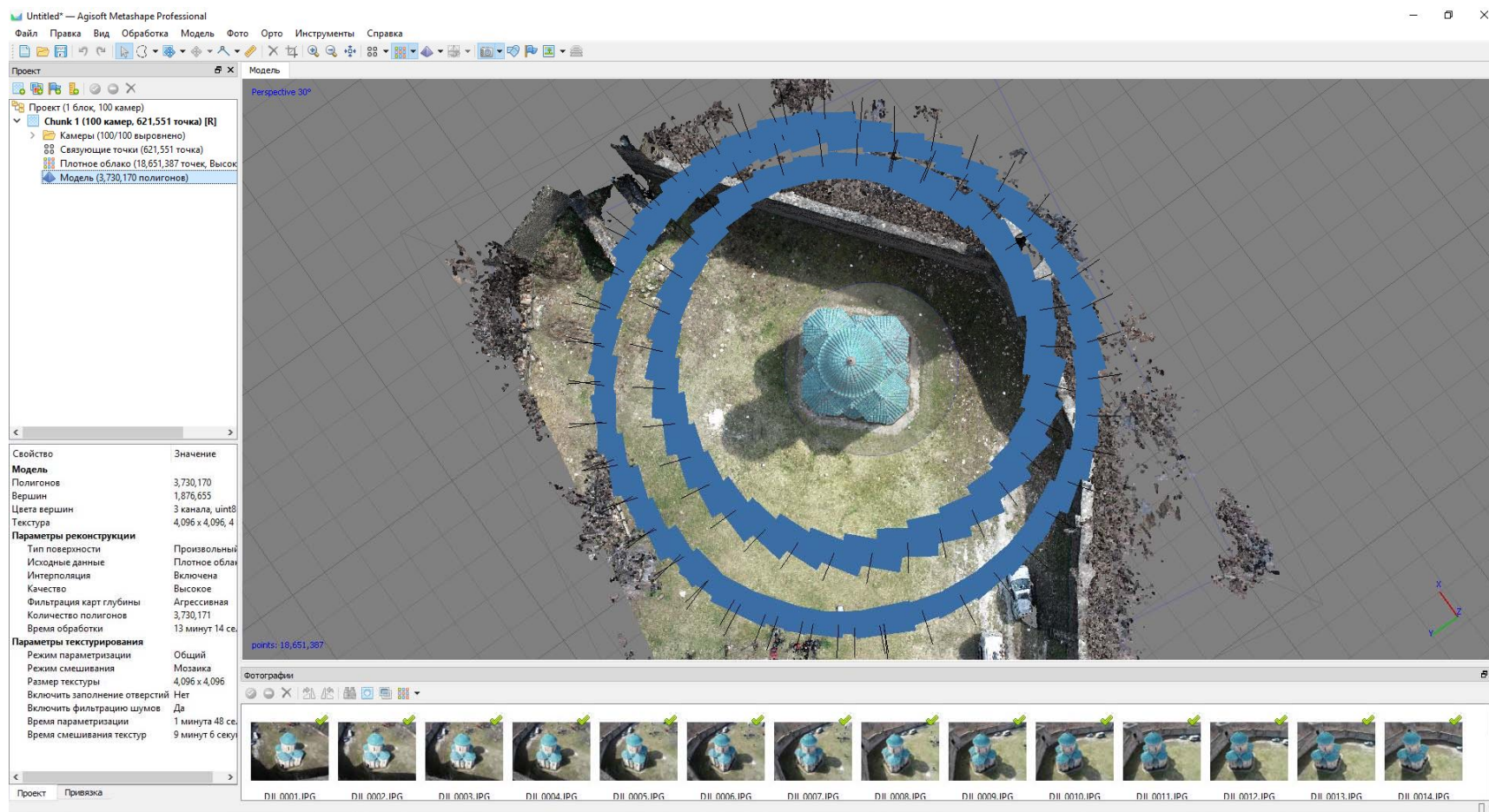
Ivane kenia, NACHPG

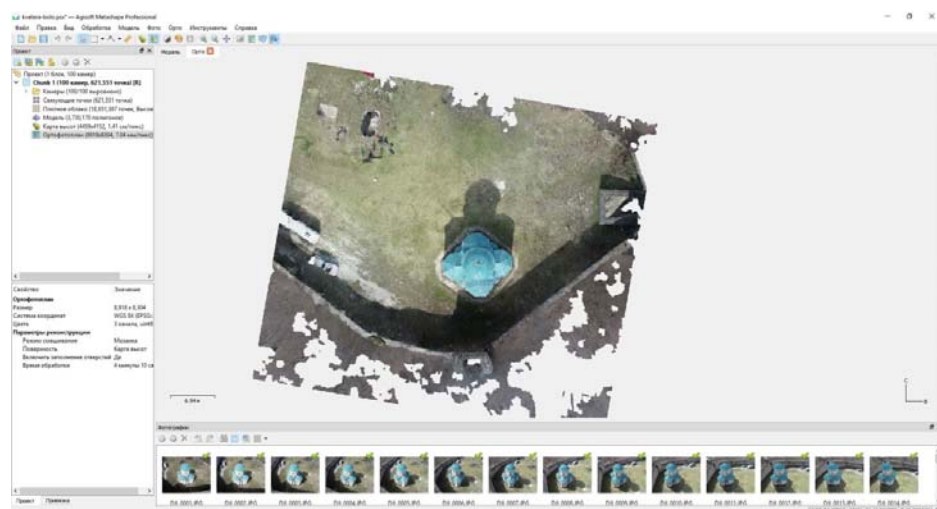
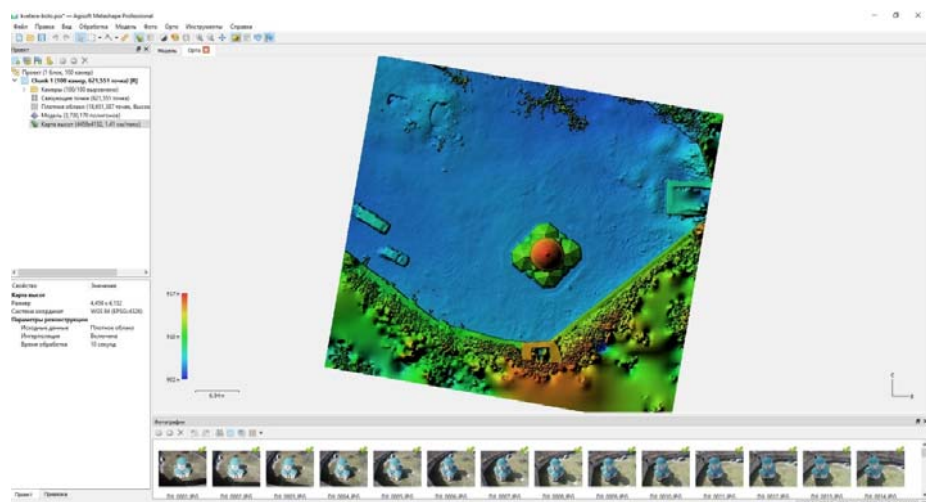
Mikheil Revia, GTU student



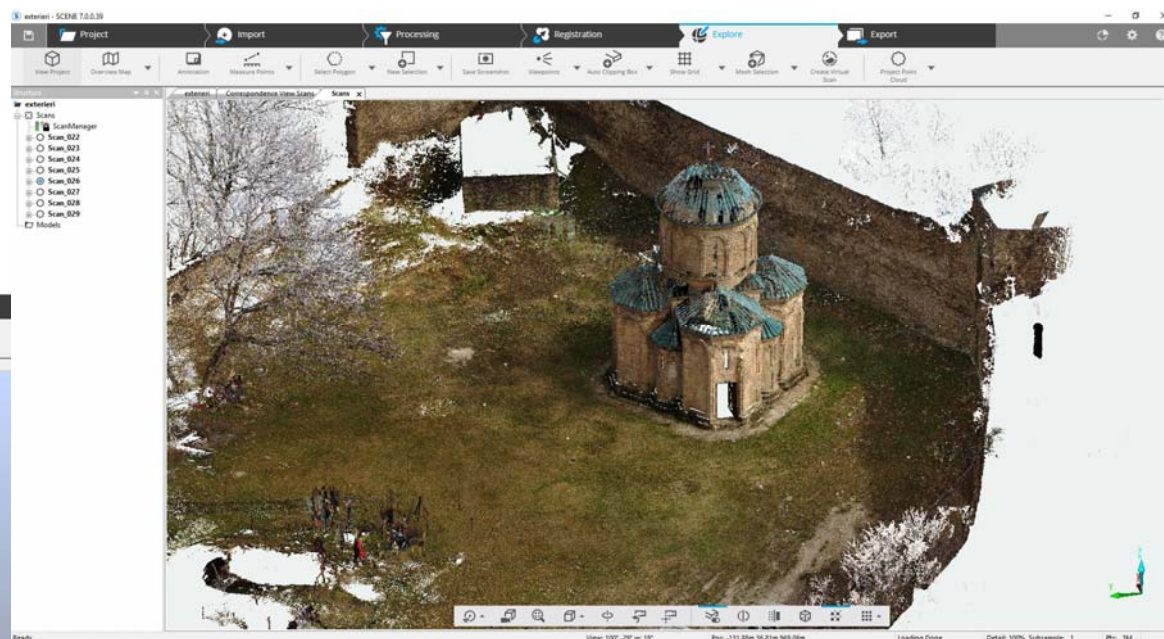
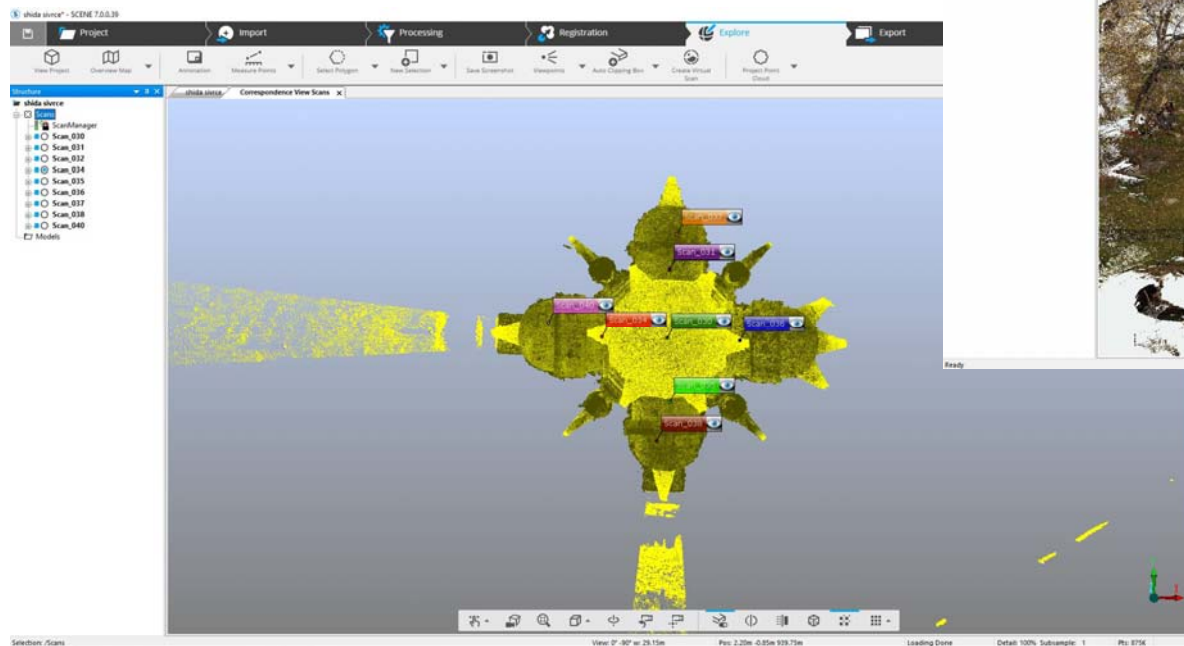
Project – Kvetera Church

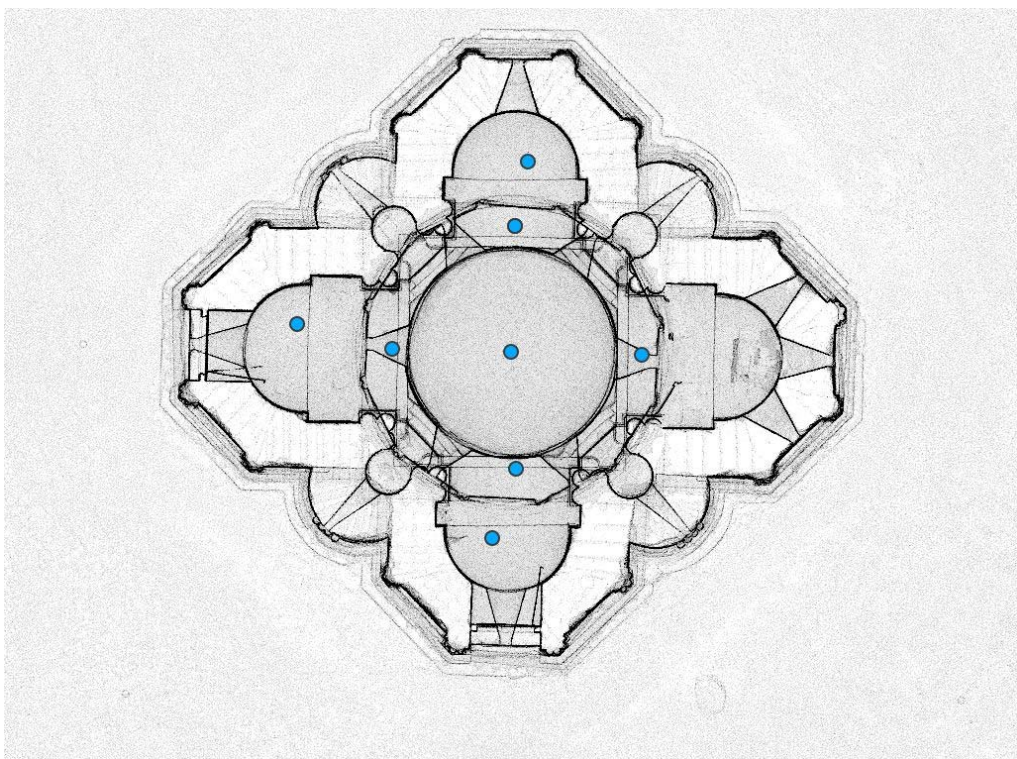
Creating 3D model- Dron images





Creating 3D model- Lazer scans

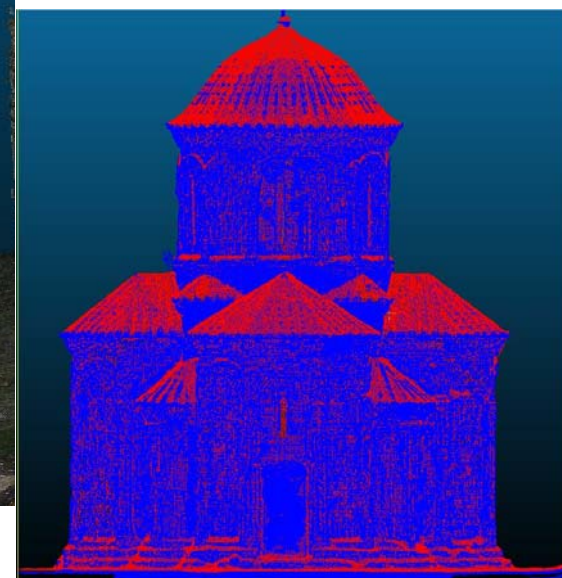
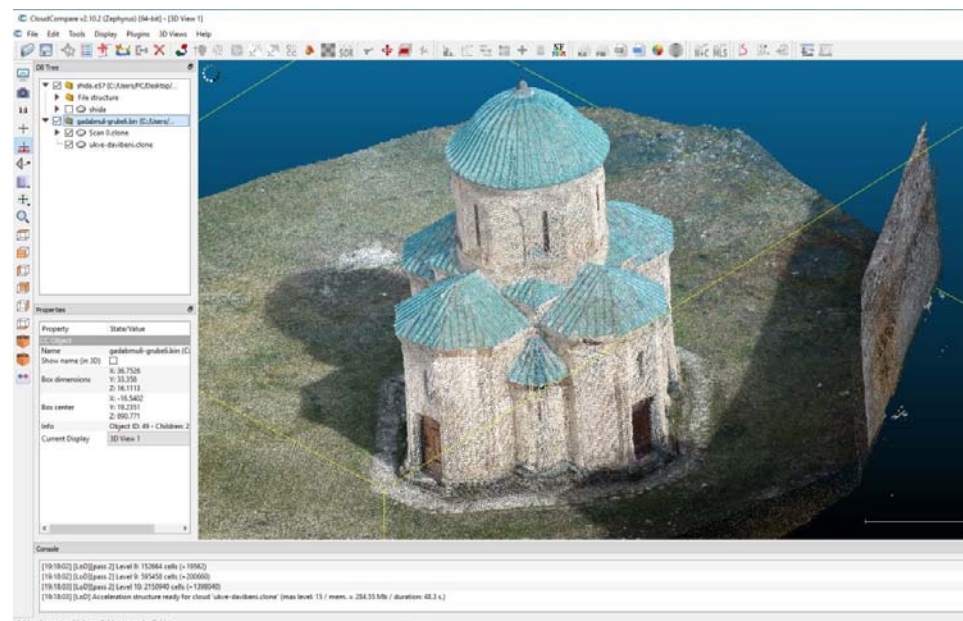




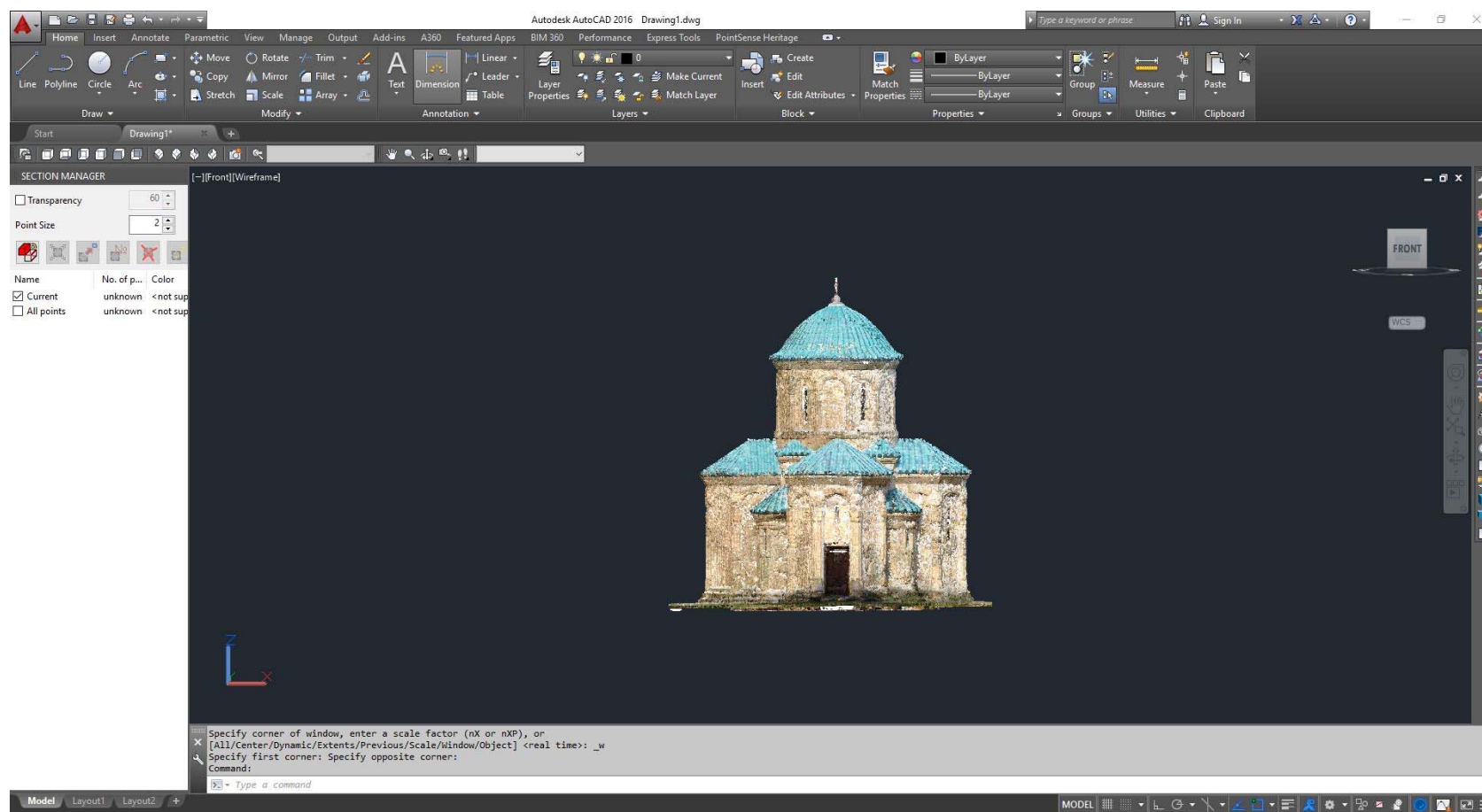
Overview Map of joined clouds



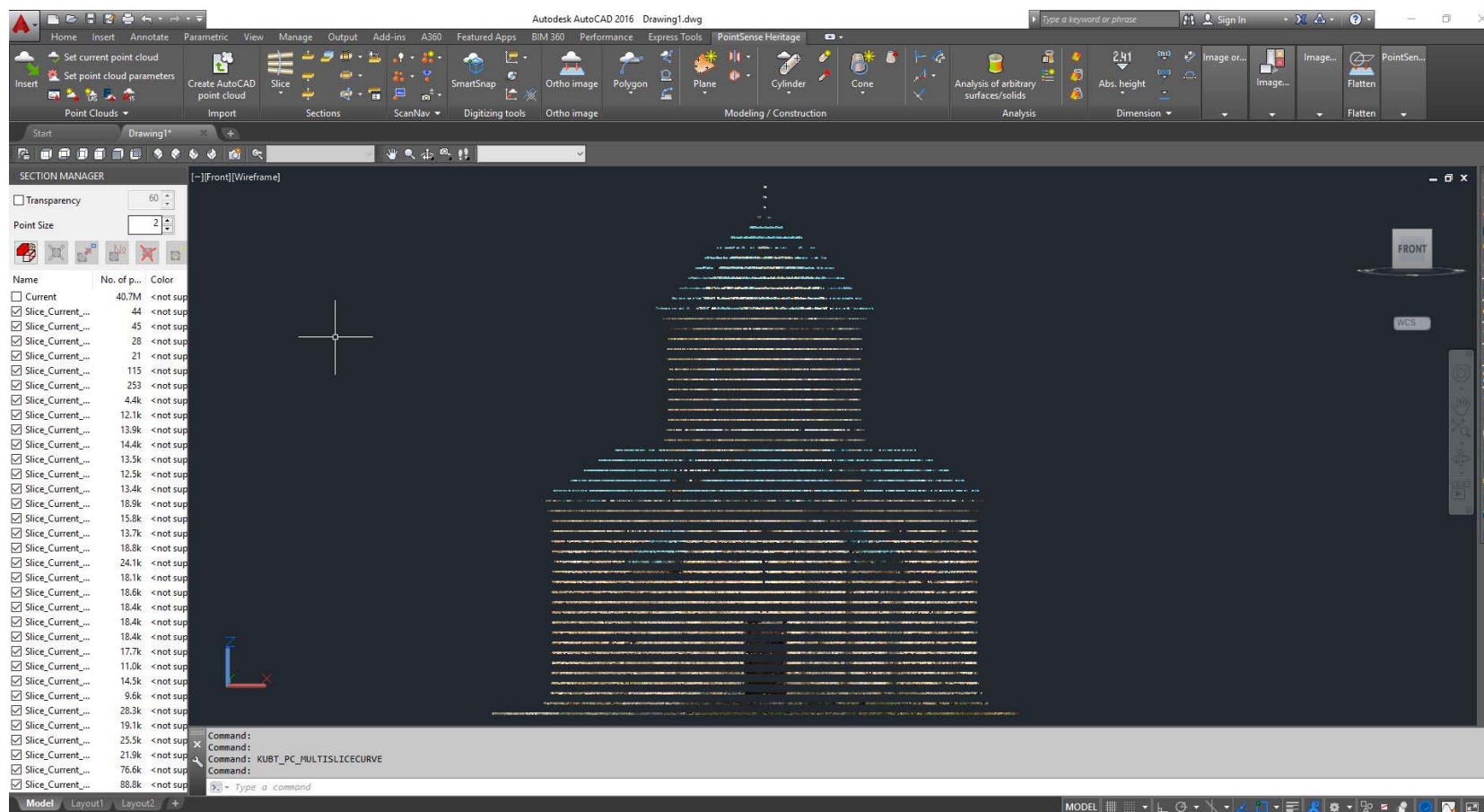
Joined clouds in CloudCompare

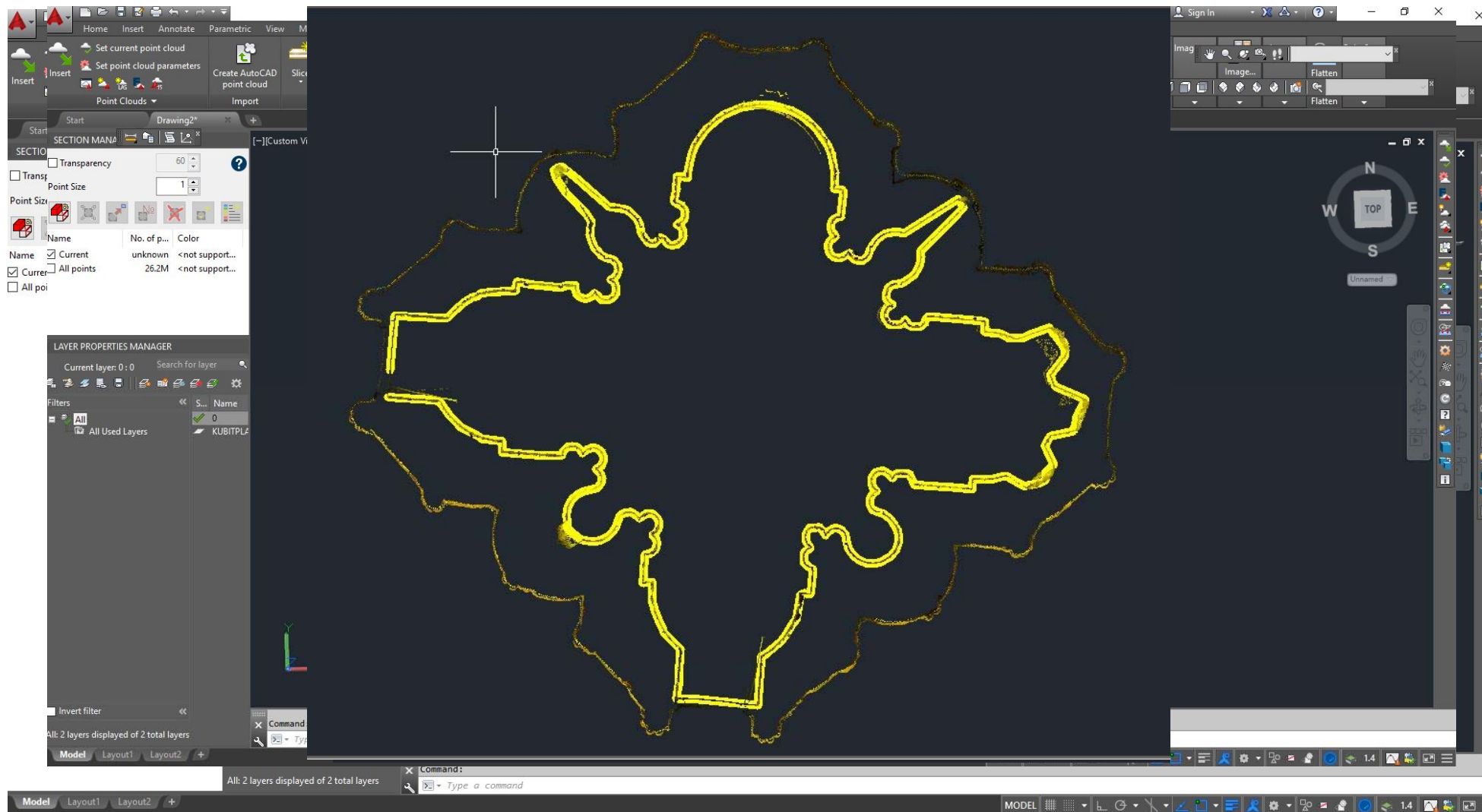


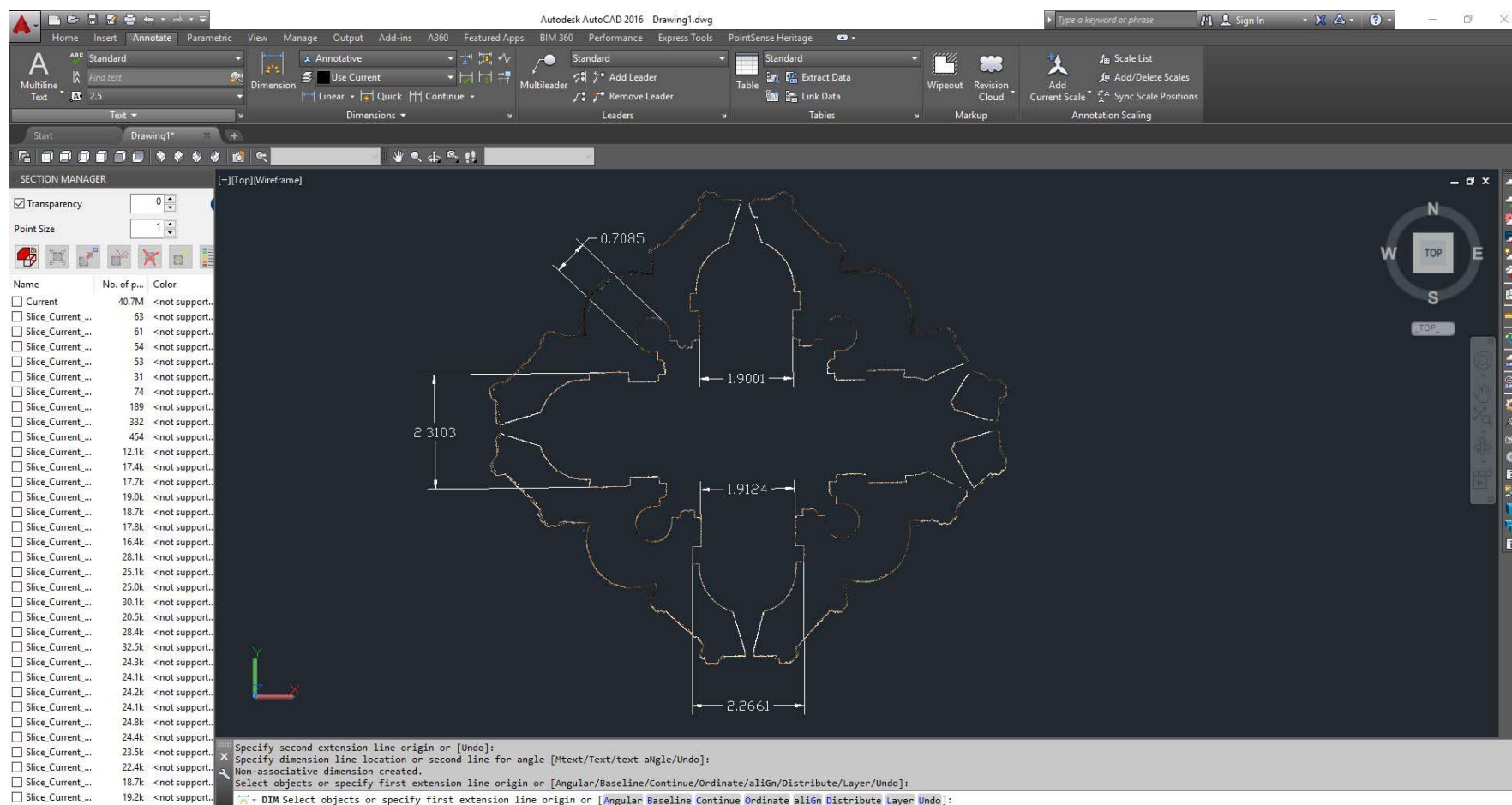
Importing cloud to Autodesk AutoCad 2016



Slices

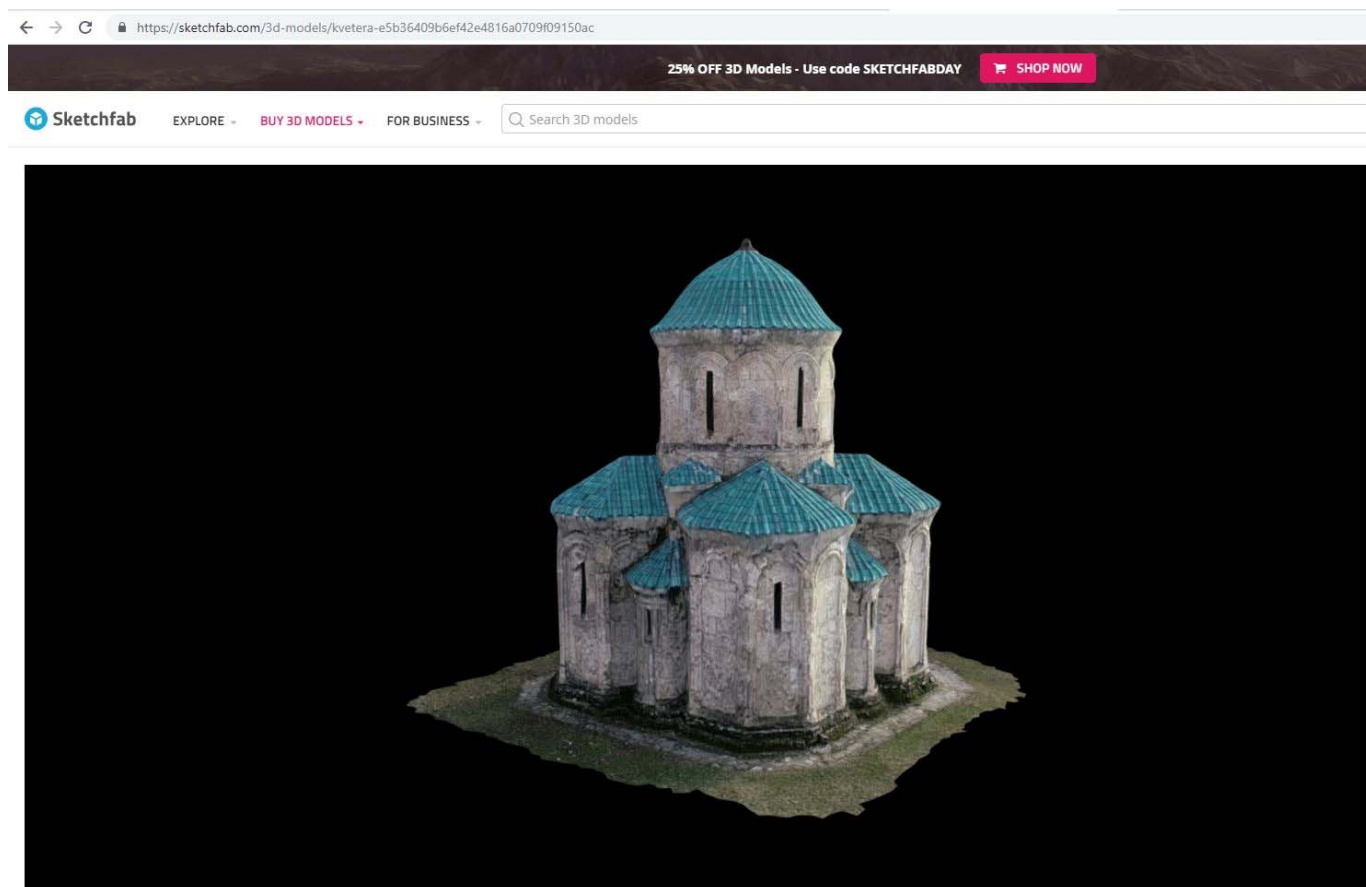






sharing 3D model

<https://sketchfab.com/3d-models/kvetera-e5b36409b6ef42e4816a0709f09150ac>





UNIVERSITAT
POLITÀCNICA
DE VALÈNCIA



Co-funded by the
Erasmus+ Programme
of the European Union



561555-EPP-1-2015-1-ES-EPPKA2-CBHE-JP

Thank You

